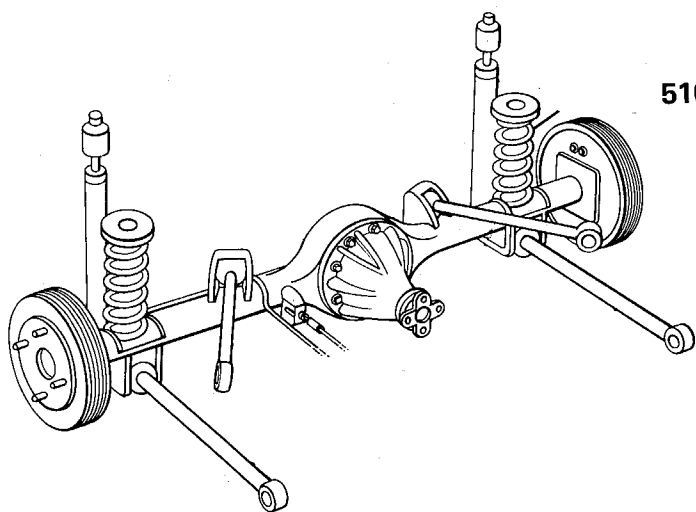
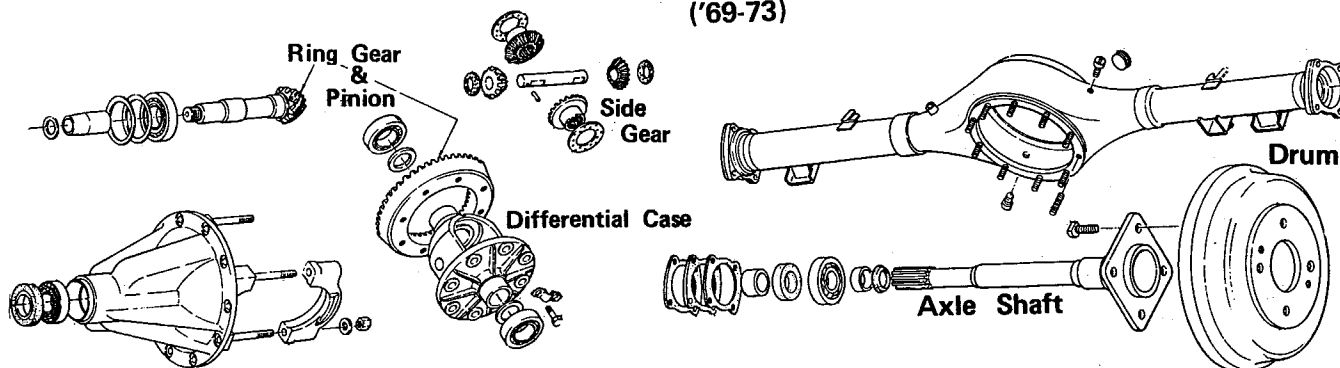


810 Rear Suspension



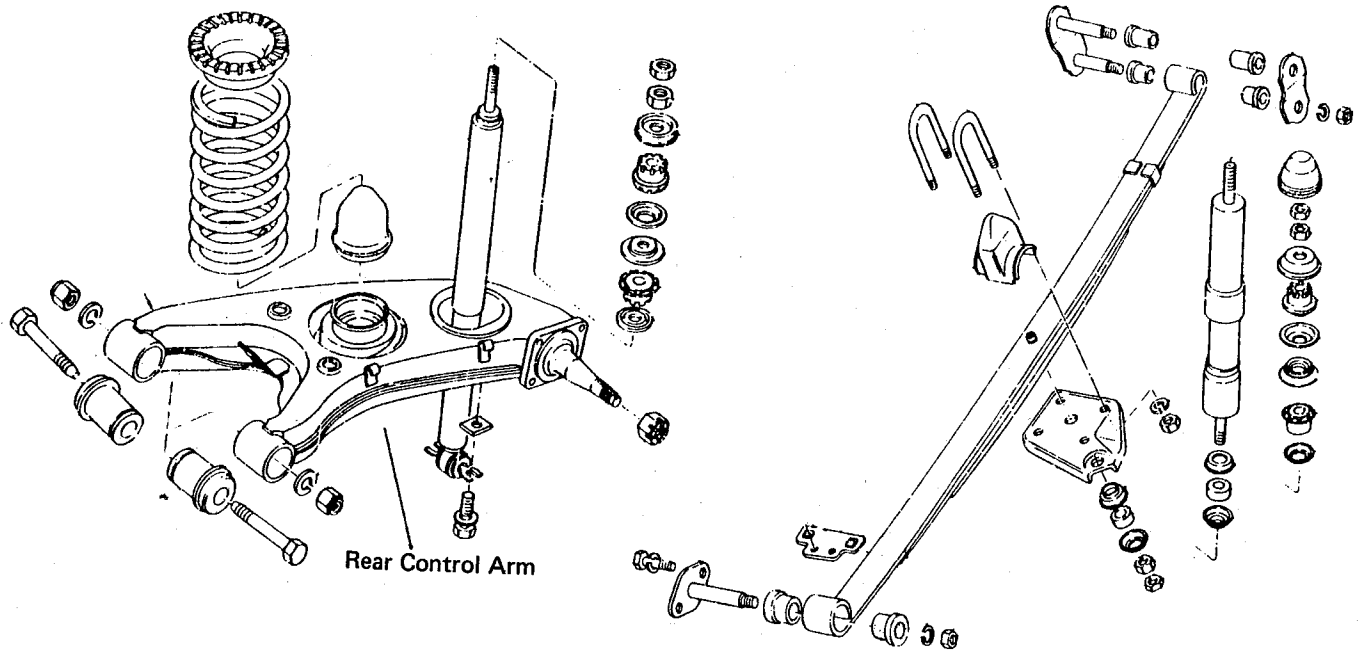
510 4-Link Rear Suspension
1978

MODEL 510 S.W.
('69-73)

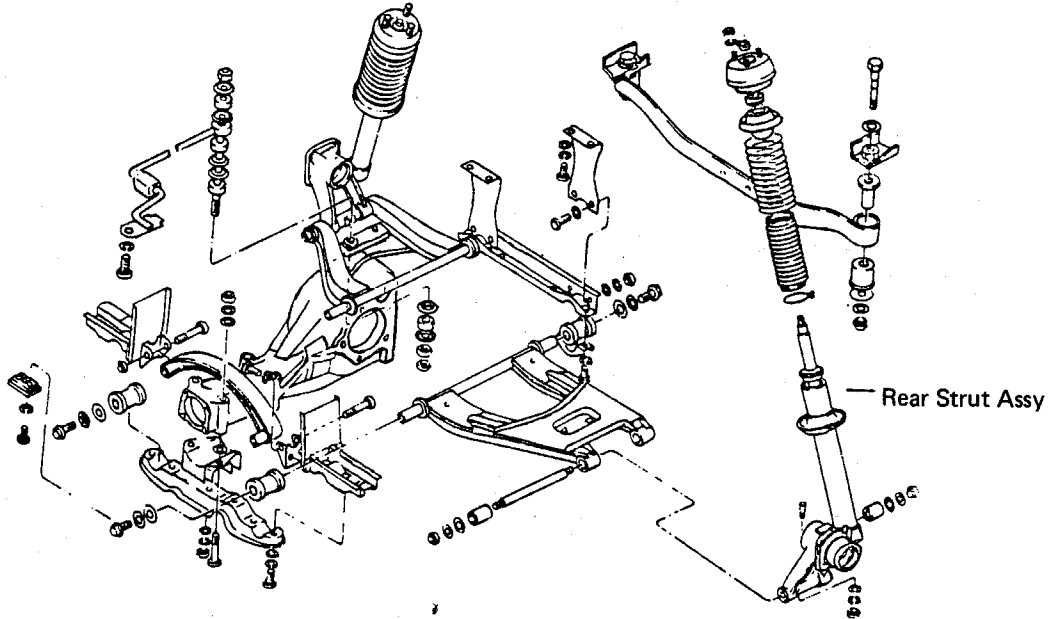


Rear Suspension Con't

MODEL F10

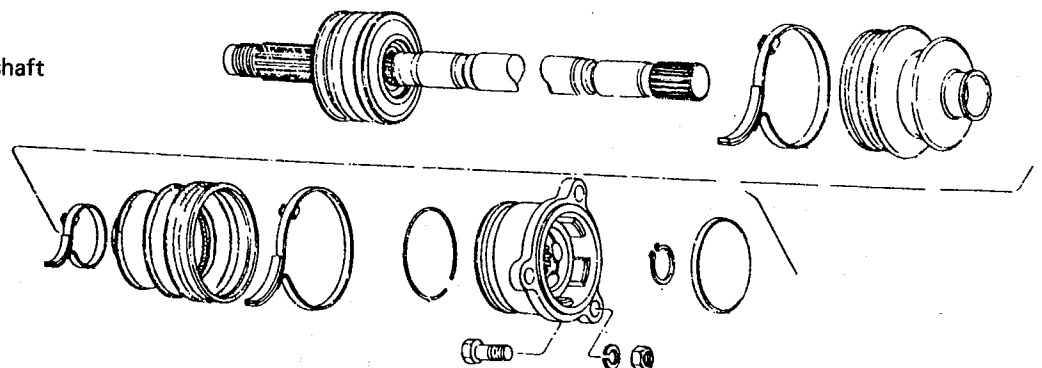


MODEL 240Z, 260Z, 280Z

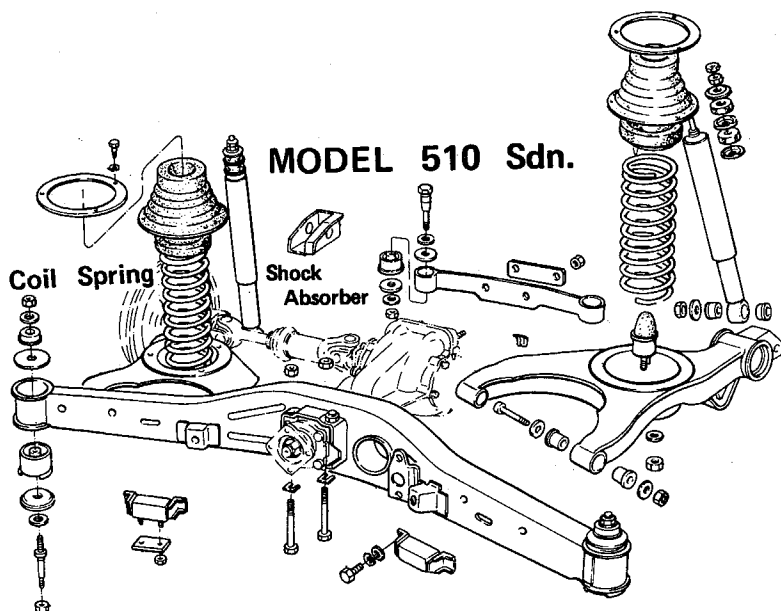


MODEL F10

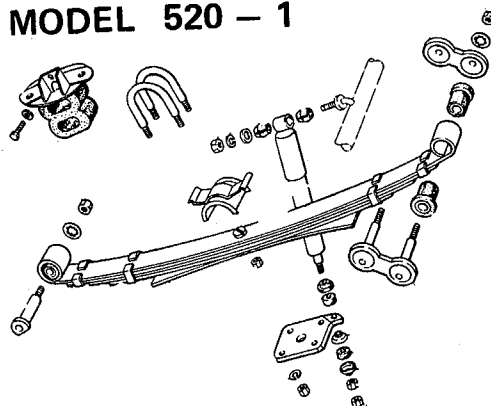
Front Driveshaft



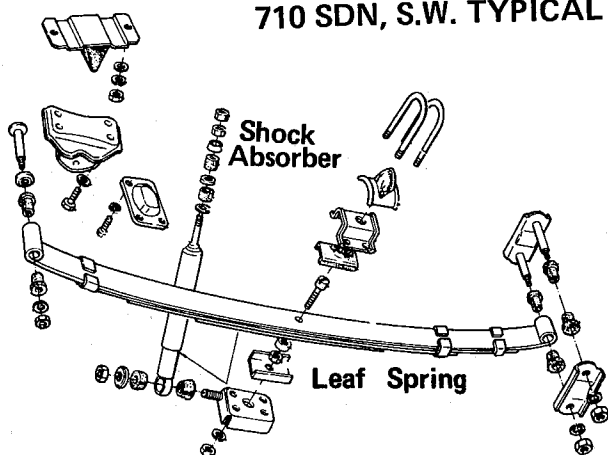
REAR SUSPENSION



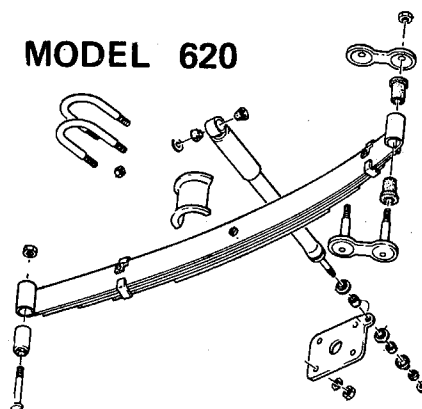
MODEL 520 - 1



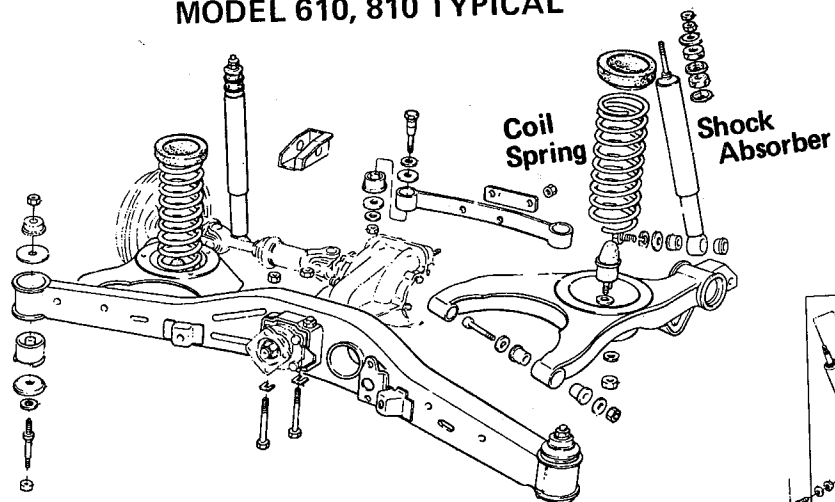
**MODEL 510 S.W.
710 SDN, S.W. TYPICAL**



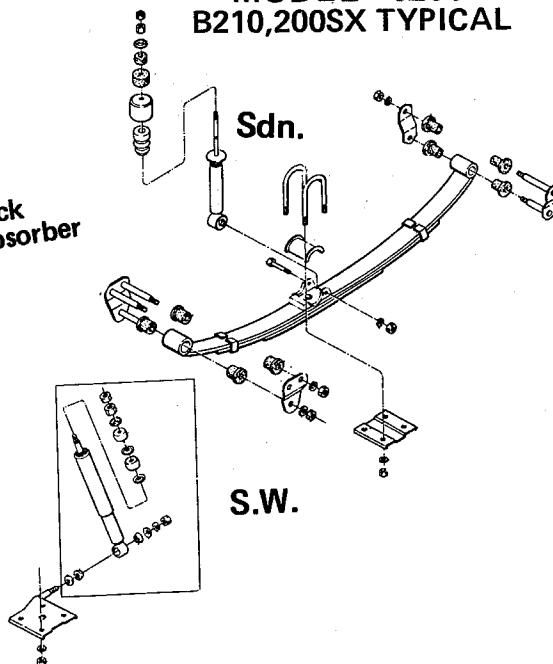
MODEL 620



MODEL 610, 810 TYPICAL

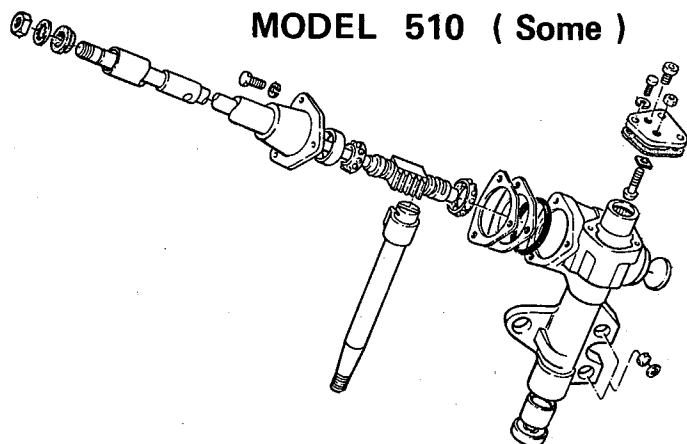


**MODEL 1200
B210, 200SX TYPICAL**

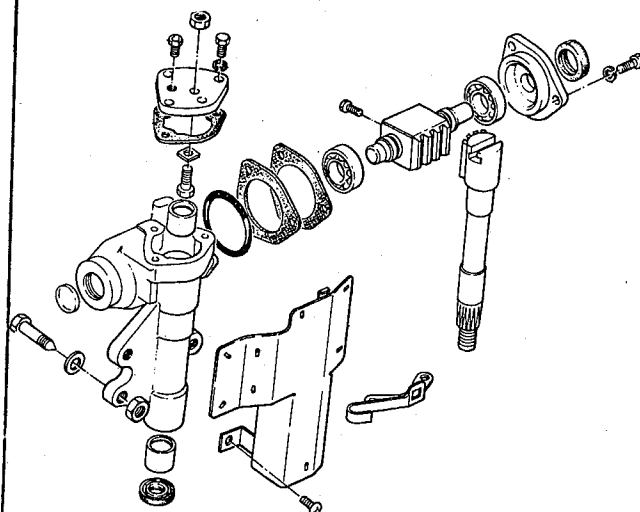


STEERING GEAR

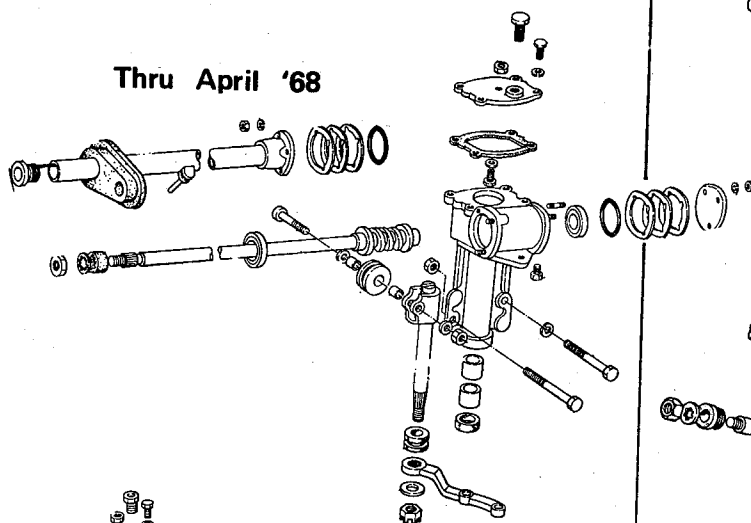
MODEL 510 (Some)



MODEL 610, 710, 810 TYPICAL

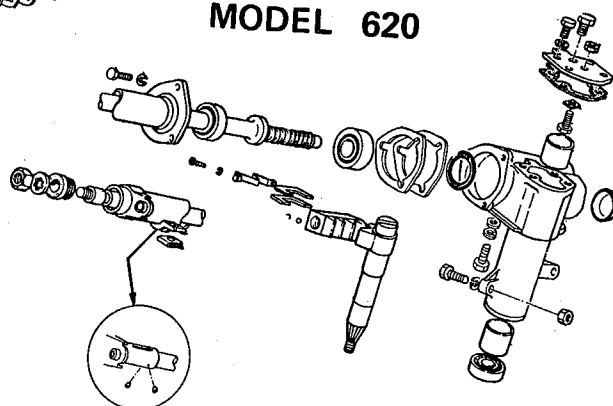


MODEL 520 & 521

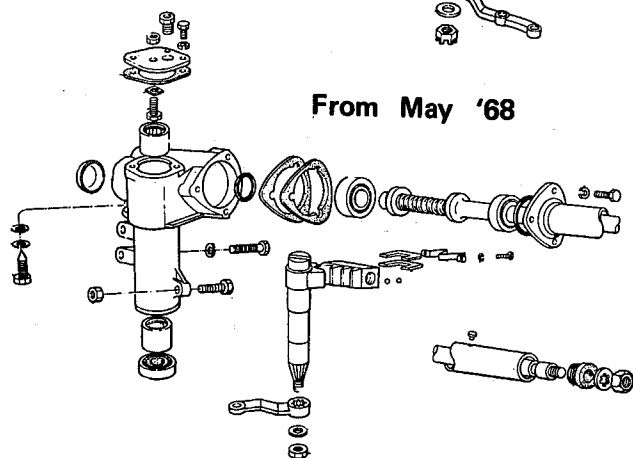


Thru April '68

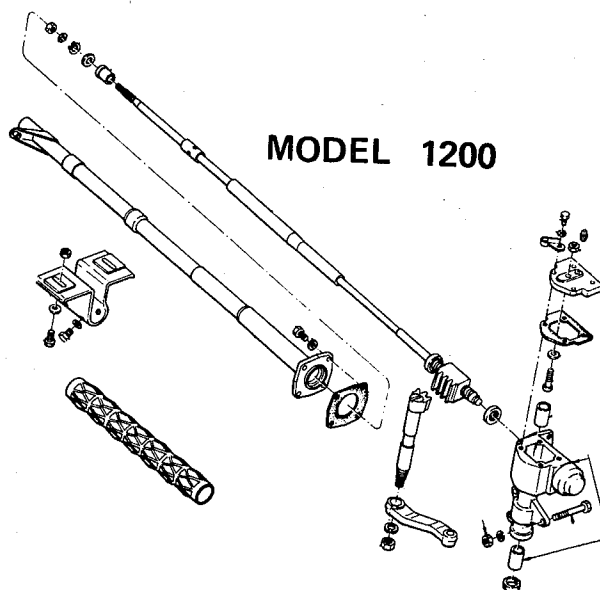
MODEL 620



From May '68

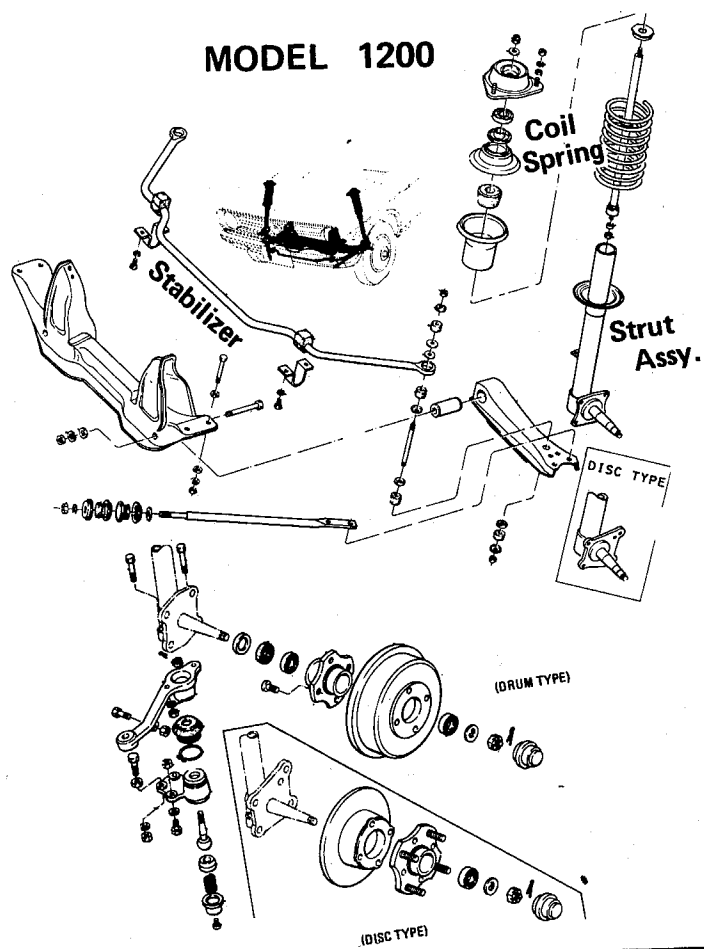


MODEL 1200

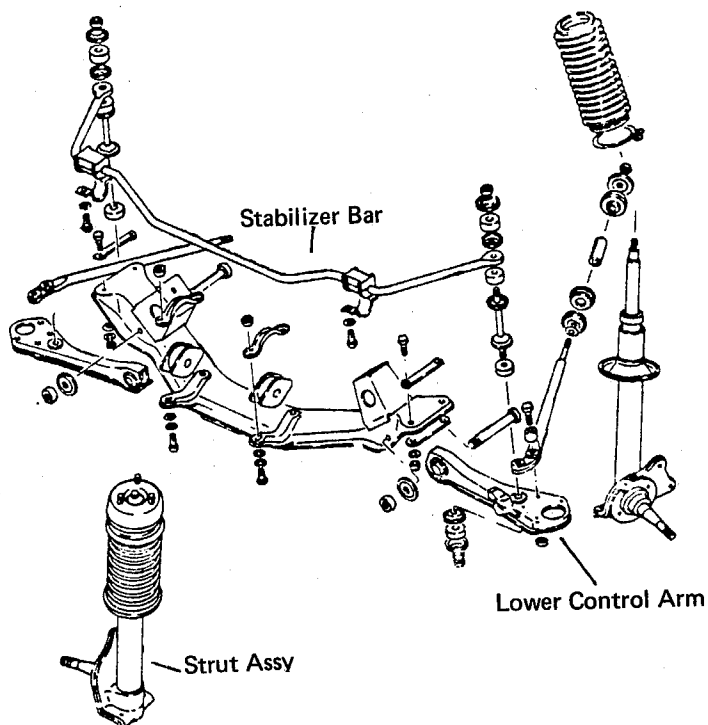


Front Axle & Suspension Con't

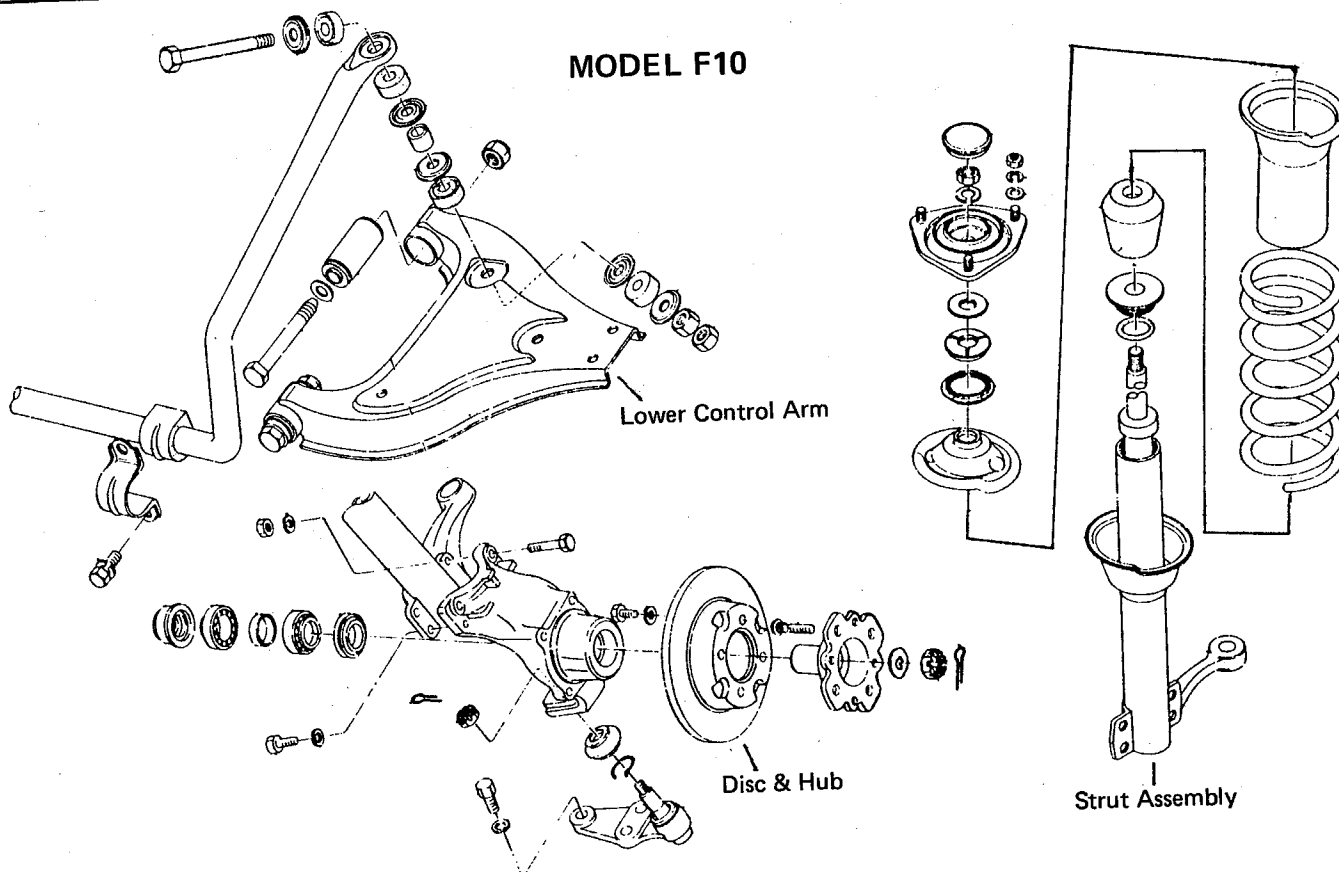
MODEL 1200



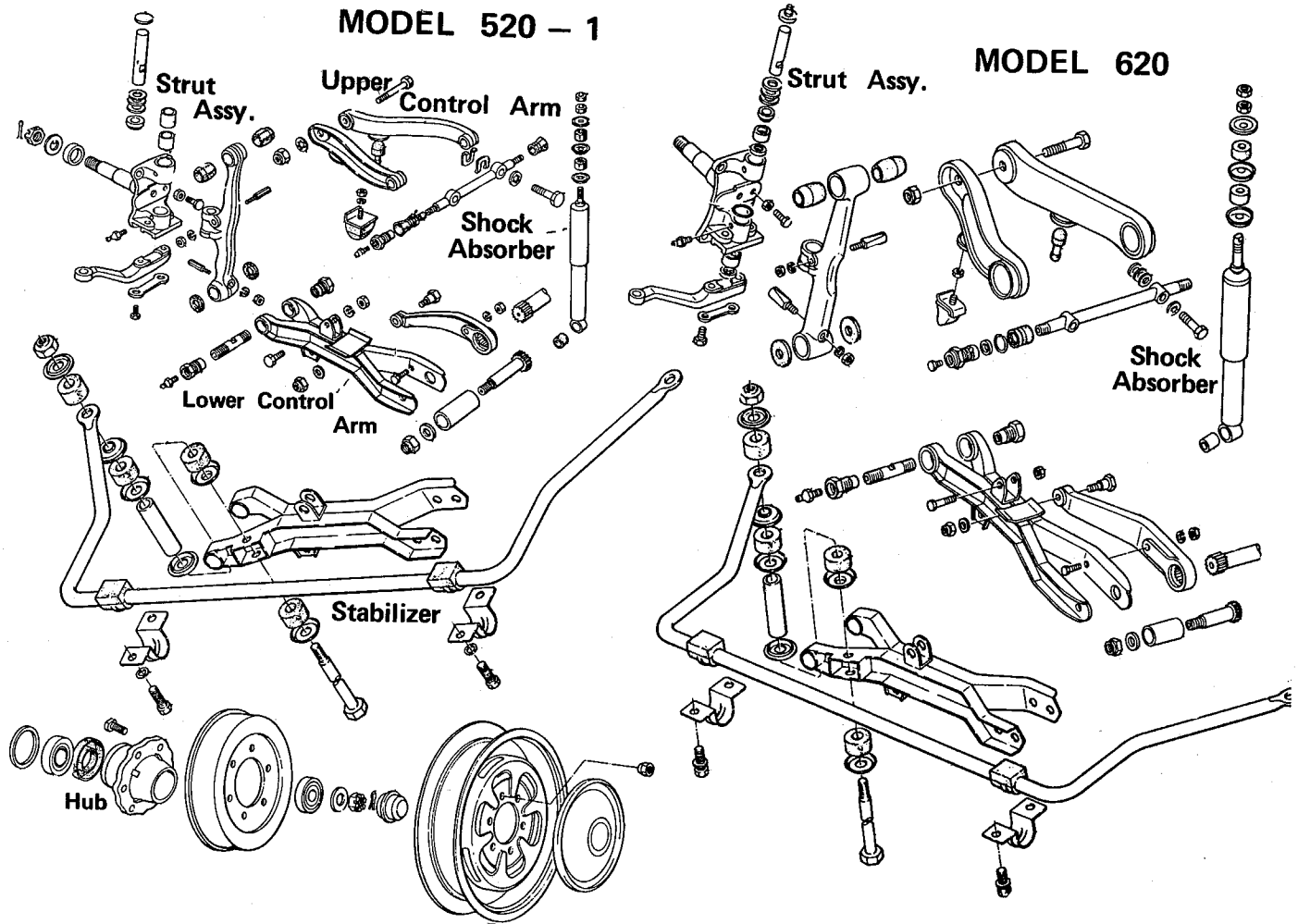
MODEL 240Z, 260Z, 280Z



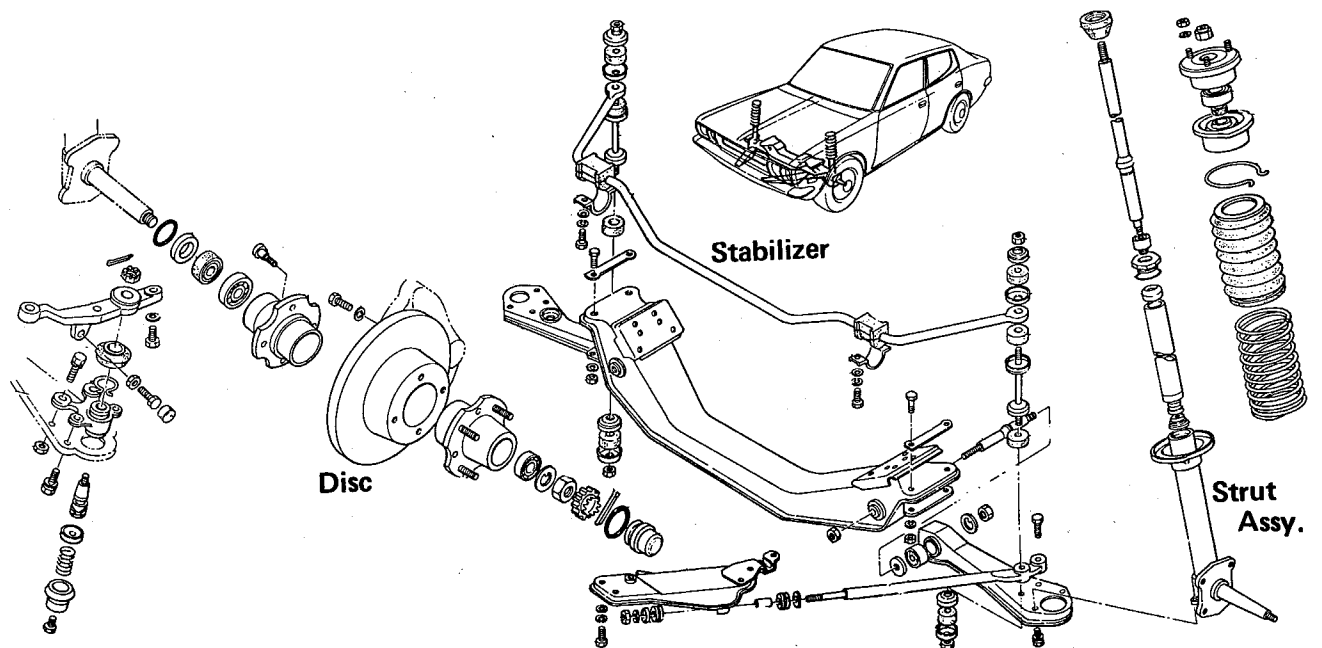
MODEL F10



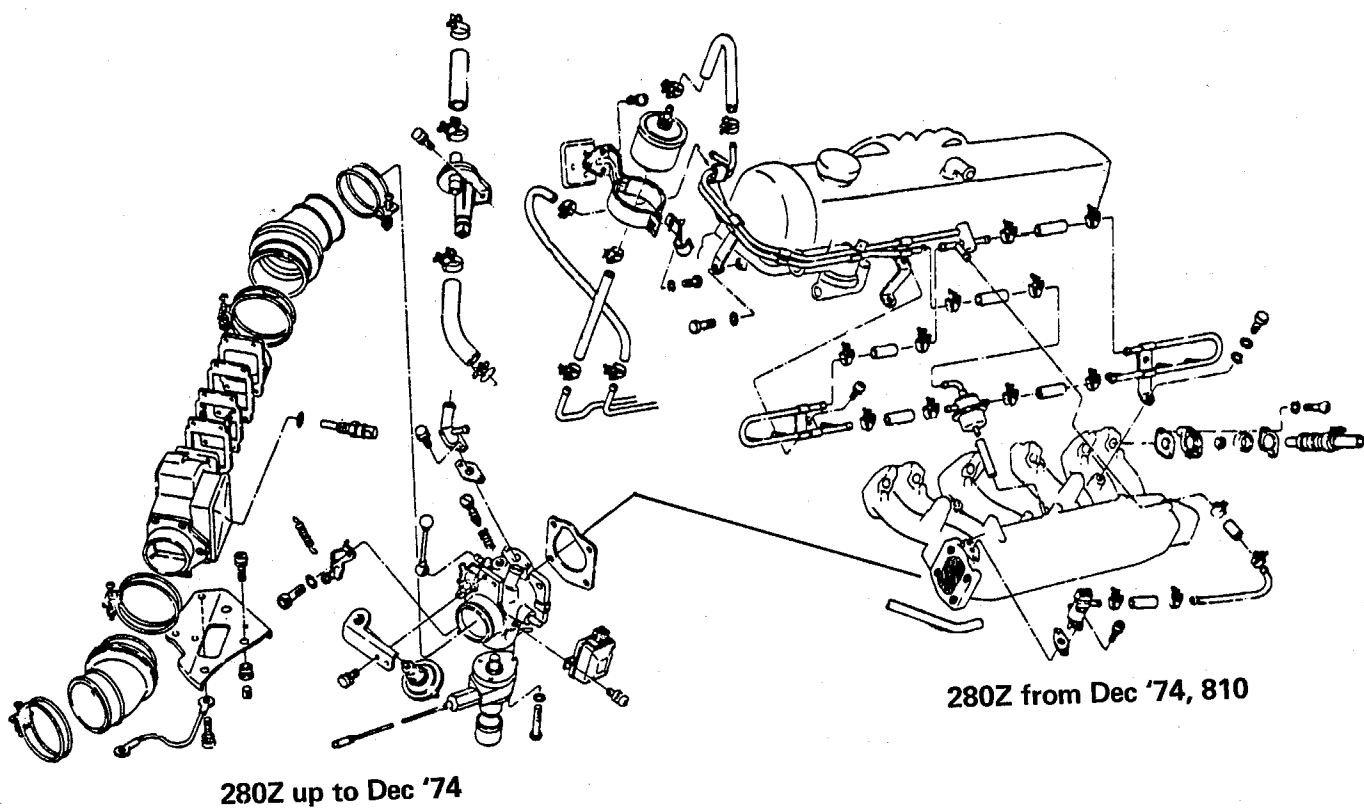
Front Axle & Suspension Con't



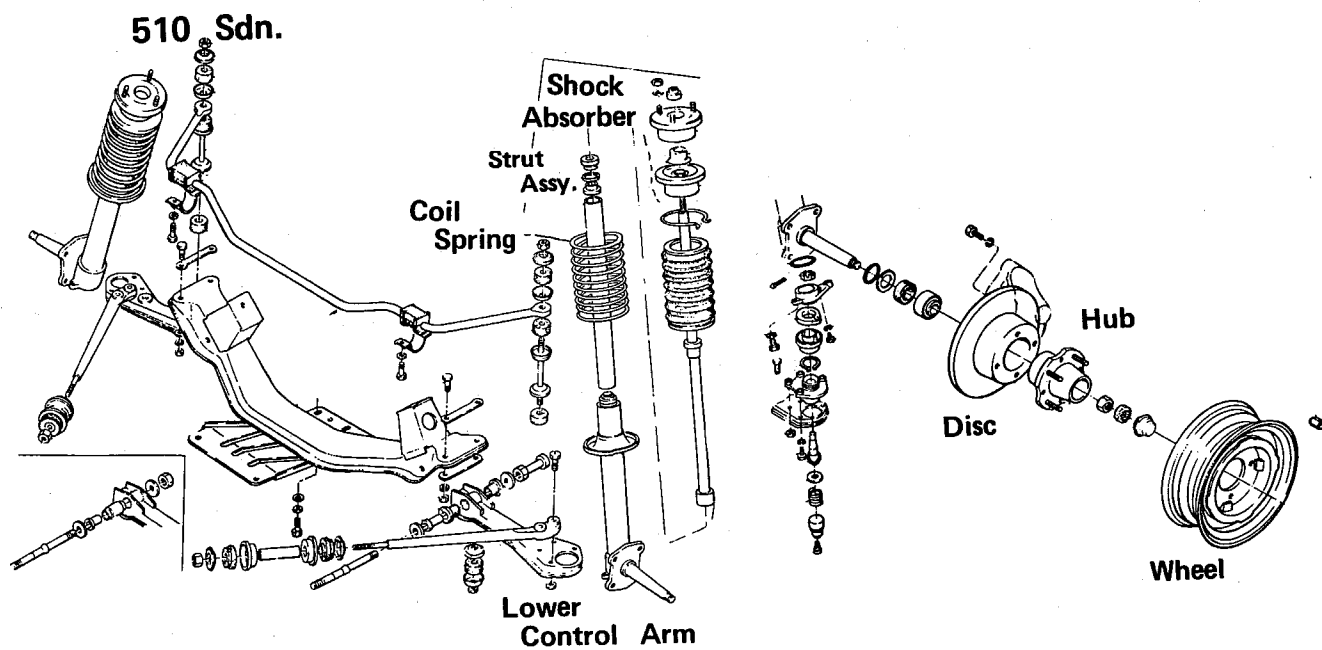
MODEL 610, 710, 810, 200SX TYPICAL



MODEL 280Z 810 FUEL INJ PARTS

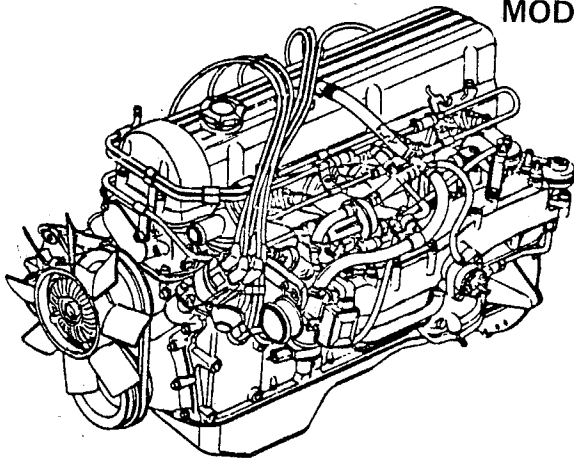


FRONT AXLE & SUSPENSION

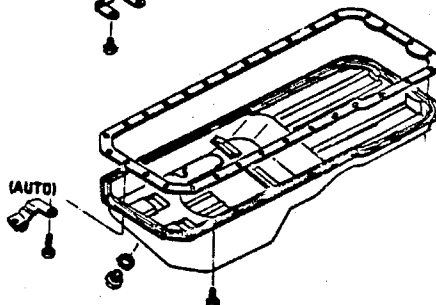
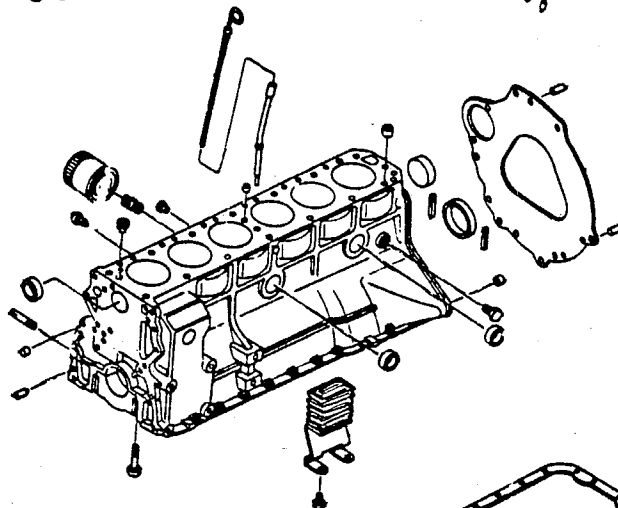
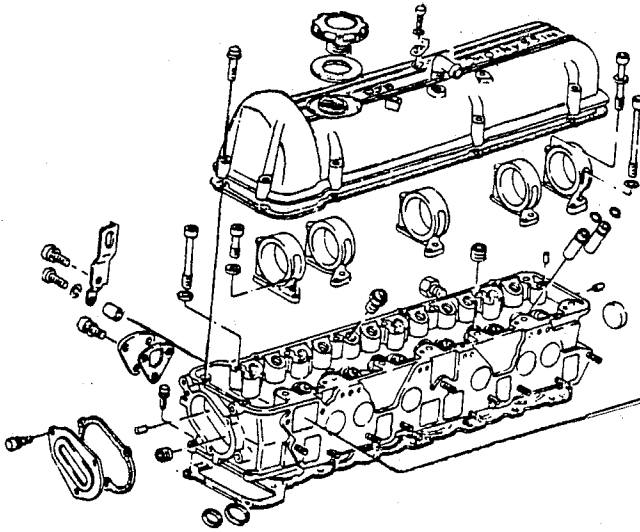


Continued

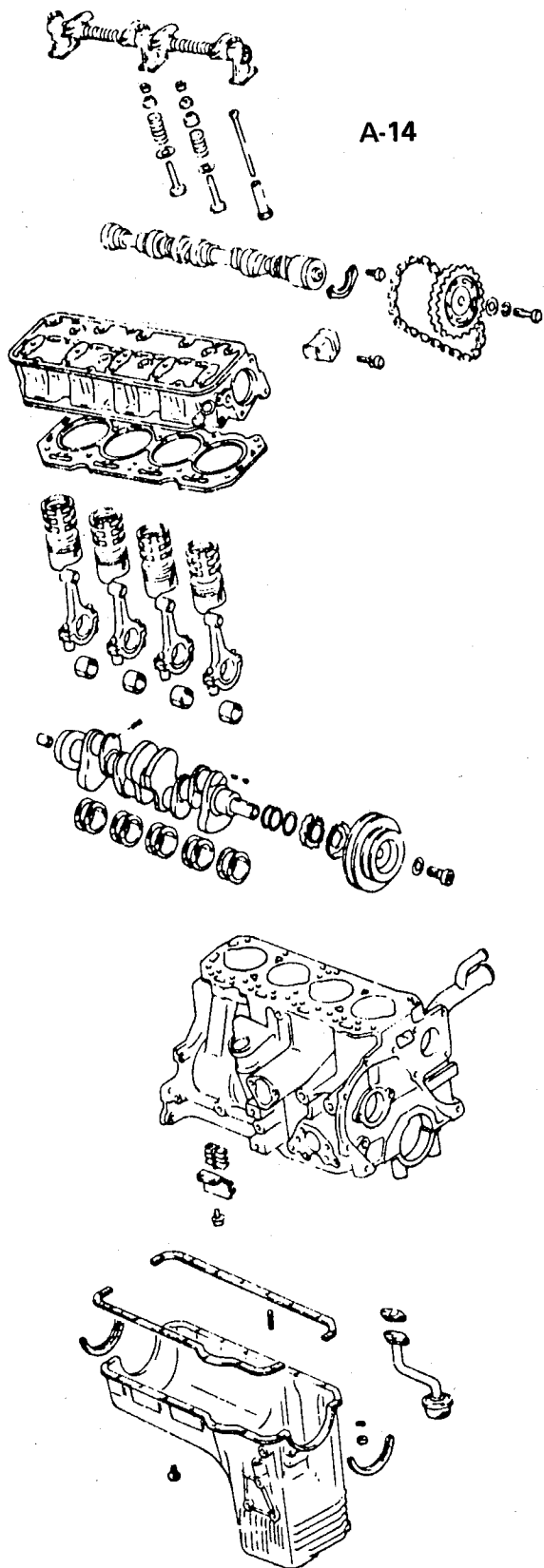
MODEL 280Z w/fuel inj
MODEL 810 TYPICAL



L-28E (280Z), L-24E (810) Typical

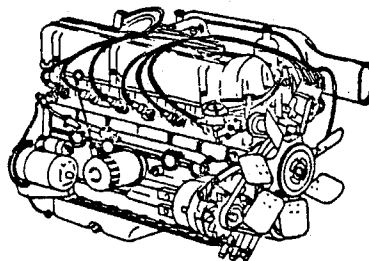


MODEL F10

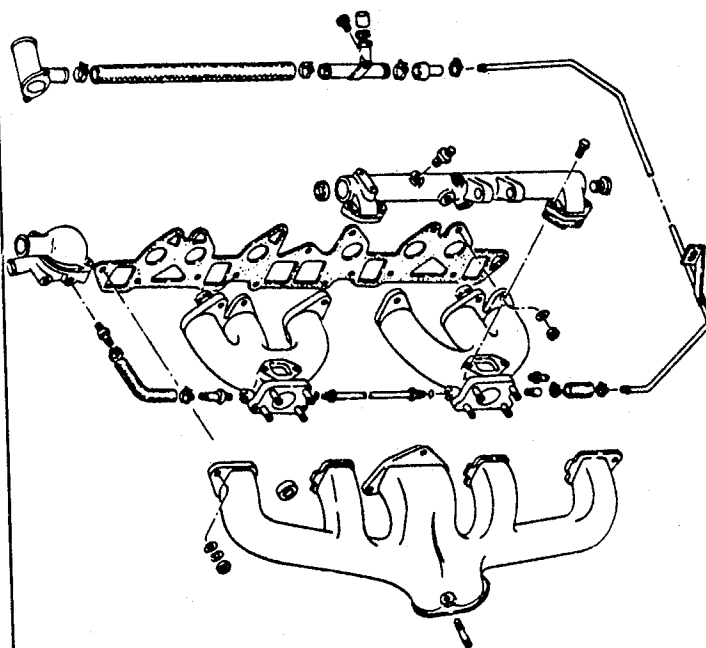


240Z, 260Z, 280Z

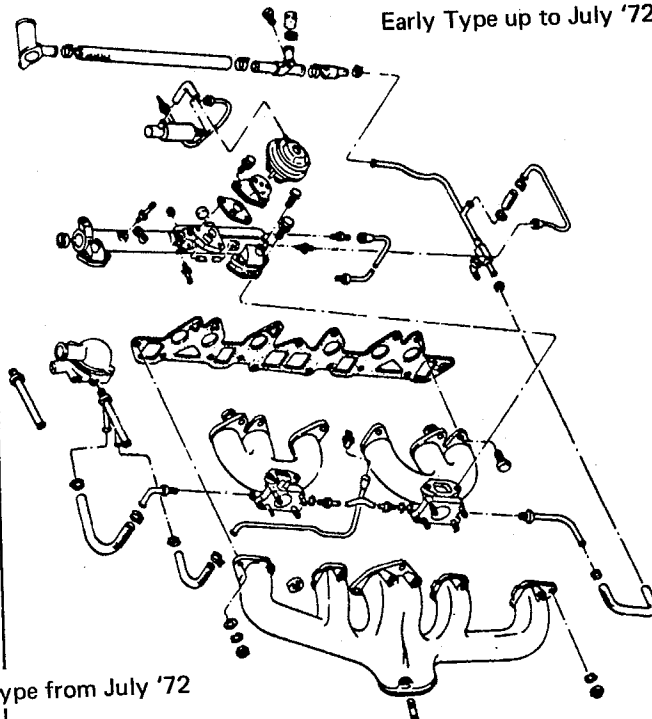
L-24, L-26, L-28 Engine Typical



Viewed from Right Side

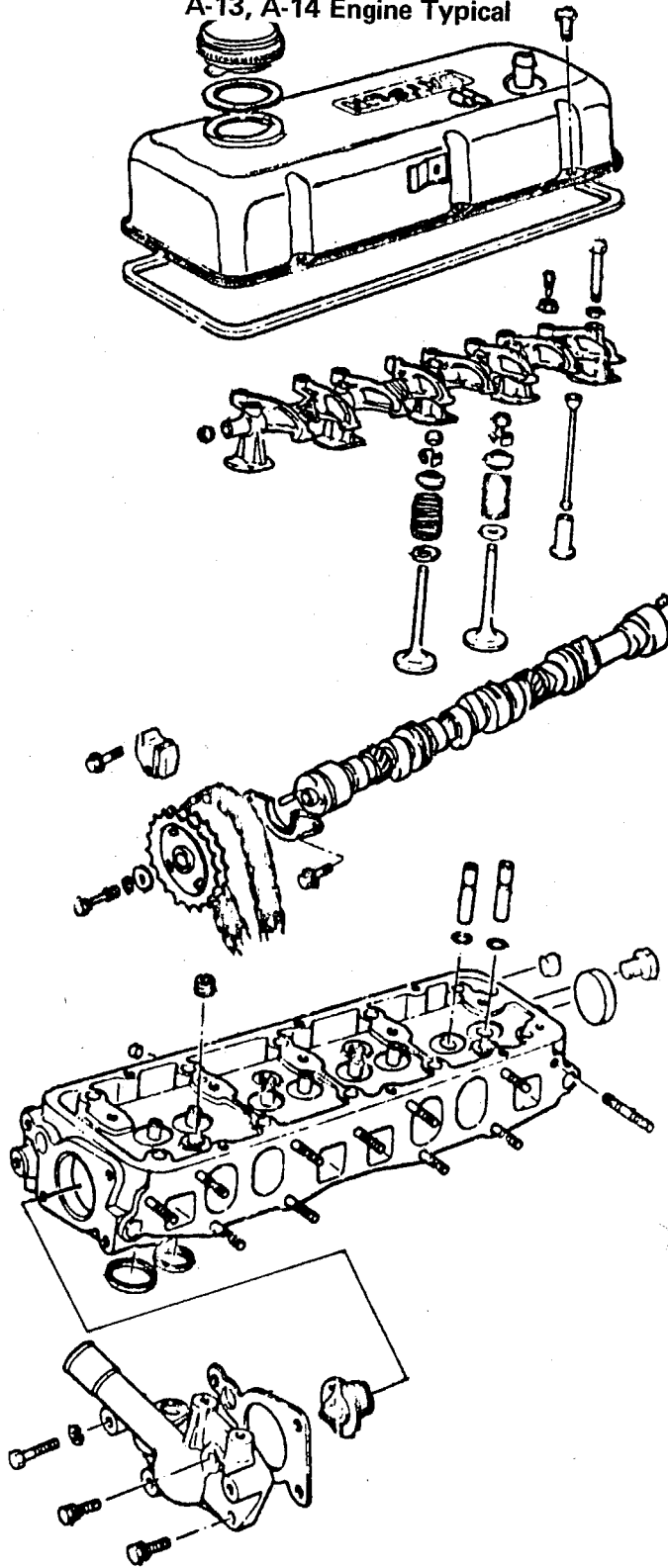


Early Type up to July '72

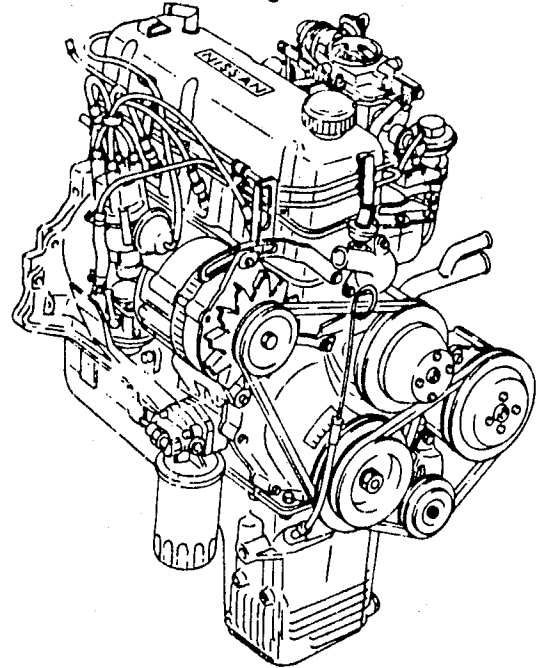


Late Type from July '72

MODEL B210
A-13, A-14 Engine Typical



MODEL F10
A-14 Engine



Viewed from Right Side

